



BUILDING PRODUCTS



AN ISO 9001 : 2015 CERTIFIED COMPANY



AN INTRODUCTION

The world we live in, is dynamic and ever-improving, with the market even more so. It is technologically driven, with millennials spearheading the change via their creativity and innovation. The value of time has become unparalleled to what it used to be before.

We at **PINEAIR** do not boast of cut-throat technology or over the top strategies of doing business, we do embrace the reality of it all, of dealing with insurmountable crisis, with betting our being the best against all odds and emerging the humble survivor.

Rather, it is the simplicity of doing business which makes our hearts swell with pride. It is reliability, trust and abject dependency in all situations, that we offer. Every deal, be it worth millions or a single penny, is not a mere exchange of profits at **PINEAIR**, but something on which we stake our reputation. It is the code by which every employee of this company lives by and adheres to, in her/his daily life.

With more than **30 years of experience working** in the HVAC industry, our Management has never led us astray to working with giants like DLF, LNT, LUMAX, WALMART etc. The journey has led us to what we are today - a brand established on trust.

PINEAIR, an **ISO 9001:2015 Certified Company** offers a vast wealth of experience in technical aspects of manufacturing & developing the product, ensuring customers are supplied with the choice of products most suited to their requirements rather than trying to fit available products to the situations.

Our manufacturing activities maintain the highest quality standards. We are fully focused on ensuring 100% customer satisfaction, which is our Key Strength. The very feeling of being committed and holding on to our words is “Deeply Satisfying.”

PRODUCTS

- Grills & Registers
- Diffusers
- Nozzles
- Dampers
- Louvers
- Sound Attenuator
- Inline Fans
- Compact Fan Section
- Centrifugal / Axial / Jet Fans
- Flexible Ducts
- Plenums, Cowls & Spigots
- Sheet Metal & Structural Work
- Air Washer & Dry Scrubber
- AHU
- FCU
- Insulation Sheets / Tubes-Nitrile / XLPE

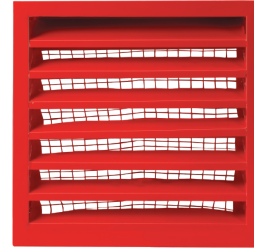
OUR CLIENTS

» AllMS Hospital	» Golyan	» OP Jindal University
» Amity University	» Grand City	» Parliament House
» Amolik Mall	» Havells India Ltd.	» Plaksha University
» Ask Commercial Tower	» Helios	» Radisson Hotel
» Bela Casa	» Hilton Hotel	» Saffron Hotel
» Bikano	» Hotel Barahi	» Sanchaya Kosh
» Biswa Bangla Biswabidyalaya	» Hotel Crown Bhairahwa	» Sarovar Hotel
» Bodhi Resort	» Hotel Sarovar Premiere	» Siddhartha Hotel
» Butwal Hospital	» Isreal Embassy	» SSB Central Hospital Research Center
» Casino Marina	» Jee Aaya Nu	» Sumit Kedia Residence
» Decathlon Sports India Pvt. Ltd.	» Jindal Villa	» The Grand Hotel
» Del Monte Foods India	» Mayfair Hotel And Resort	» Varnabas Museum Hotel
» DIAL	» Mercure Hotel	» Wipro Hydraulics Private Ltd.
» Dixon Electro Manufacturing Pvt. Ltd.	» Metropolitan Hotel	» Yak And Yeti Hotel
» DLF Camellias	» Moxi Hotel	» Yasoda Plus Pharmacies India Pvt. Ltd.
» Freight System India Pvt. Ltd.	» Muktinath Bikash Bank Site	
» Godrej Golf Links	» Neelkanth Dhaba	
» Gokarneshwar	» New Age Factory	



Fresh / Exhaust Air Louvers 50mm Deep Series AG-638 / SG-638*

- Material of Construction : Aluminium Profiles / Galvanised Steel*
- Finish : RAL / Powder Coat / Mill
- Standard Size : H 200-1200mm W 200-1200mm & plus



Fresh / Exhaust Air Louvers 80mm Deep Series AG-639 / SG-639*

- Material of Construction : Aluminium Profiles / Galvanised Steel*
- Finish : RAL / Powder Coat / Mill
- Standard Size : H 200-1200mm W 200-1200mm & plus



Gravity Louvers Series SU-662/663

- Material of Construction : Aluminium / Galvanised Steel
- Finish : RAL / Powder Coat / Mill
- Standard Size : H 600-1800mm W 600-1800mm



Acoustic Louvers Series SU-631

- Material of Construction : Galvanised Steel
- Finish : RAL / Powder Coat
- Standard Size : H 600-2000mm W 400-1200mm & plus



Sand Trap Louvers Series SU-644

- Material of Construction : Galvanised Steel
- Finish : RAL / Powder Coat / Mill
- Standard Size : H 450-1200mm W 450-1950mm & plus



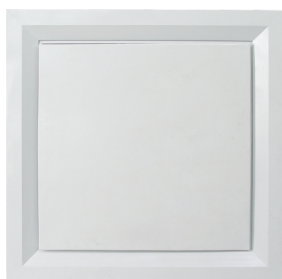
Standard Diffuser
Series AF-704

- Material of Construction : Aluminium Profiles & Sheet
- Finish : RAL / Powder Coat / Mill
- Standard Size : SQR. of 150/225/300/375/450 mm



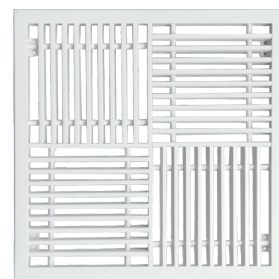
Grid Diffuser
Series AFG-704

- Material of Construction : Aluminium Profiles & Sheet
- Finish : RAL / Powder Coat / Mill
- Standard Size : SQR. of 150/225/300/375 mm having outer size of 595x595 mm



Plaque Diffuser
Series AP-604

- Material of Construction : Aluminium Profiles/ Alu. Sheet
- Finish : RAL / Powder Coat / Mill
- Standard Size : Outer 595 x 595 mm



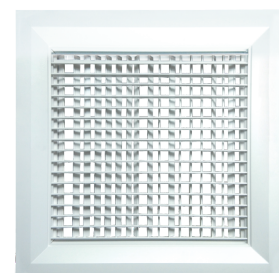
Four Quadrant Grill
Series AF-454

- Material of Construction : Aluminium Profiles
- Finish : RAL / Powder Coat / Mill
- Standard Size : SQR. of 200/300/400/500/600 mm



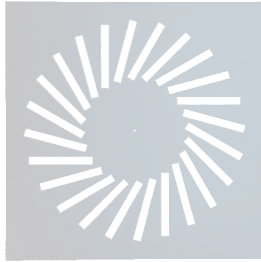
One / Two-way Fixed Deflection Diffuser
Series AF-451/452

- Material of Construction : Aluminium Profiles
- Finish : RAL / Powder Coat / Mill
- Standard Size : SQR. of 150/225/300/375/450 mm



Adjustable Double Deflection Diffuser
Series AF-101D

- Material of Construction : Aluminium Profiles
- Finish : RAL / Powder Coat / Mill
- Standard Size : SQR. of 150/225/300/375/450 mm



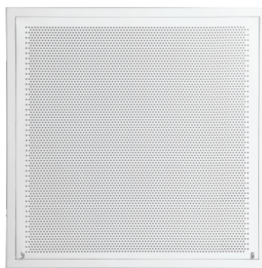
Helical Diffuser
Series AC-872

- Material of Construction : Steel Sheet
- Finish : RAL / Powder Coat / Mill
- Standard Size : Outer 595 x 595 mm



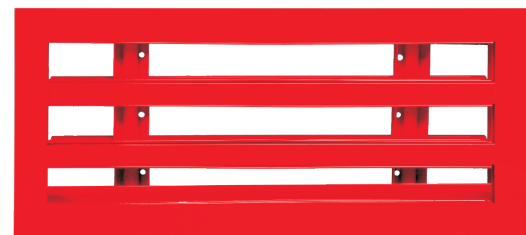
Swirl Diffuser
Series SF-783

- Material of Construction : Aluminium Sheet
- Finish : RAL / Powder Coat / Mill
- Standard Size : Outer 595 x 595 mm



Perforated Diffuser
Series AC-320

- Material of Construction : Aluminium Profiles
- Finish : RAL / Powder Coat / Mill
- Standard Size : Outer 595 x 595 mm



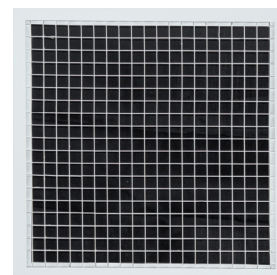
Slot Diffuser
Series AG-290

- Material of Construction : Aluminium Profiles
- Finish : RAL / Powder Coat / Mill
- Standard Size : H-50 to 200 mm / W-1800 mm & plus



Linear Diffuser
Series AF-791/792

- Material of Construction : Aluminium Profiles
- Finish : RAL / Powder Coat / Mill
- Standard Size : H-150/225/300/375/450mm, W-1800mm



Egg Crate Diffuser
Series AC-452

- Material of Construction : Aluminium Profiles & Sheet
- Finish : RAL / Powder Coat / Mill
- Standard Size : SQR. of 150/225/300/375/450mm



Linear Plaque Diffuser

Series AP-304L

- Material of Construction : Aluminium Profiles & Sheet
- Finish : RAL / Powder Coat / Mill
- Standard Size : H-150/225/300/375/450mm, W-1800mm



Laminar Air Flow Unit

Series LFD-330

- Material of Construction : Aluminium / SS / GI
- Finish : Mill Finish / Powder Coated
- Standard Size : Tailor Made



Exhaust Valve

Series SR-141

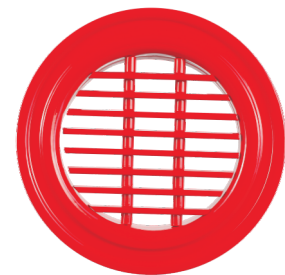
- Material of Construction : Steel
- Finish : RAL / Powder Coat
- Standard Size : 125/150/200mm Dia



Exhaust Valve

Series SR-142

- Material of Construction : ABS
- Finish : White
- Standard Size : 150/200mm Dia



Exhaust Grill

Series AR-241

- Material of Construction : Aluminium Profiles
- Finish : RAL / Powder Coat / Mill
- Standard Size : 150/250/300mm Dia



Pan Type Diffuser

Series AC-931

- Material of Construction : Spinned Aluminium & Sheet
- Finish : RAL / Powder Coat / Mill
- Standard Size : 150/200/250 mm Dia



Round Plate Diffuser

Series AC-731

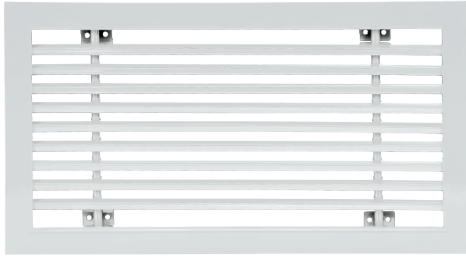
- Material of Construction : Spinned Aluminium and sheet
- Finish : RAL / Powder Coat / Mill
- Standard Size : 150/200/250/300 /375/400/450mm Dia



Round Diffuser

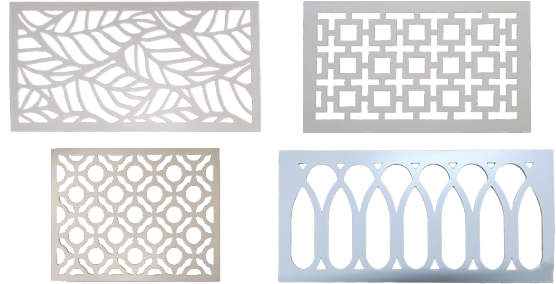
Series AC-831

- Material of Construction : Spinned Aluminium
- Finish : RAL / Powder Coat / Mill
- Standard Size : 150/200/250/300/375 /400/450mm Dia



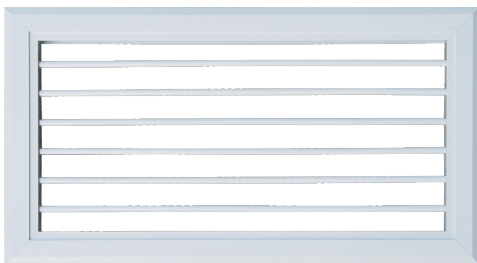
Linear Grill
Series AC-451

- Material of Construction : Aluminium Profiles
- Finish : RAL / Powder Coat / Mill
- Standard Size : H-50 to 300mm / W-1800*



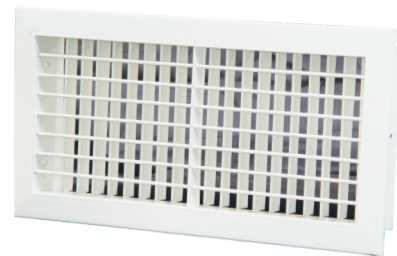
Decorative Grills
Series DGE-1000

- Material of Construction : GI / SS
- Finish : RAL / Powder Coat / Mill
- Standard Size : H-100 to 300mm / W-1800*



SL Grill (Adjustable)
Series AC-101 / 102

- Material of Construction : Aluminium Profiles
- Finish : RAL / Powder Coat / Mill
- Standard Size : H-50 to 300mm / W-1800



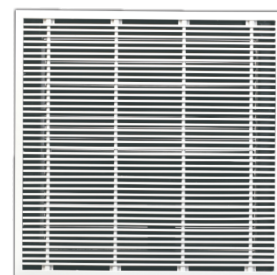
DL Grill (Adjustable)
Series AC-101D / 102D

- Material of Construction : Aluminium Profiles
- Finish : RAL / Powder Coat / Mill
- Standard Size : H-50 to 300mm / W-1800



Door Grill
Series AC-181

- Material of Construction : Aluminium Profiles
- Finish : RAL / Powder Coat / Mill
- Standard Size : H-50 to 300mm / W-1800



Floor Grill
Series AF-470

- Material of Construction : Aluminium Profiles
- Finish : RAL / Powder Coat / Mill
- Standard Size : H 600 x 600

Jet Diffuser - Series AR-150

- Material of Construction : Spinned Aluminium
- Finish : RAL / Powder Coat / Mill
- Standard Size : 250/315/380mm Dia



Spot Diffuser - Series AR-190

- Material of Construction : Spinned Aluminium
- Finish : RAL / Powder Coat / Mill
- Standard Size : 200/300/400mm Dia

Eye Ball Diffuser - Series AR-200

- Material of Construction : Spinned Aluminium
- Finish : RAL / Powder Coat / Mill
- Standard Size : 200/275/315/400mm Dia



Drum Jet Louver - Series AR-300

- Material of Construction : Aluminium Profiles
- Finish : RAL / Powder Coat / Mill
- Standard Size : Available on Request



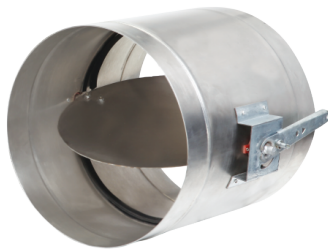
Collar Damper
Series A-BB, M-BB, SS-BB

- Material of Construction : Aluminium Profiles / GI / MS / SS
- Finish : Powder Coat / Mill
- Standard Size : H-100 to 300mm W-1800mm



Volume Control Damper
Series SU-620 & 650

- Material of Construction : Galvanised Steel
- Option : Motorised Actuator
- Standard Size : H-200 to 1200mm x W 200 to 2000 & Plus
- Depth : 120 mm (SU-620) / 150 mm (SU-650)



Round Damper
Series SR-650Q

- Material of Construction : Aluminium / Galvanised Steel / SS
- Option : With Motorised Actuator
- Standard Size : 100/150/200/250/300/375/400/450 Dia



Gear Driven Damper
Series AU-651/651s

- Material of Construction : Aluminium Profiles
- Option : GI Casing / Motorised Actuator / Powder Coat Finish
- Standard Size : H-210 to 2010mm x W 200 to 1500 & Plus



Fire Damper
Series FD-150

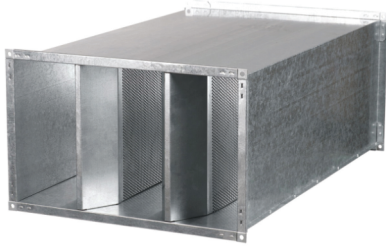
- Material of Construction : Galvanised Steel
- Option : Motorised / Fusible Link / With or Without Sleeve
- Standard Size : H 200-1200mm W 200-2000mm & plus



Fire Damper For Round Ducts
Series FD-150CR

- Material of Construction : Galvanised Steel
- Option : Motorised / Fusible Link
- Standard Size : 300-1800mm Dia

DUCT SILENCERS



Rectengular / Square Duct Silencer
Series SA-100 / 200

- Material of Construction : Galvanised Steel
- Custom Built



Round Duct Silencer
Series SAR-50/100

- Material of Construction : Galvanised Steel
- Finish : Plain or Powder Coat
- Option : With or Without Pod
- Custom Built

ACCESSORIES



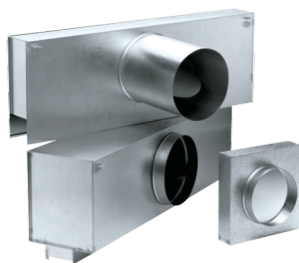
ABS Louver
Series AST-AL



ABS Decorative Grill
Series AST-ADG



SS Louver
Series AST-SL



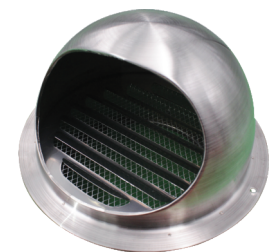
Plenum Box
Series SN-200

- Material of Construction : Galvanised Steel
- Option : Double Skin
- Custom Built



Canvas Joints
Series SE-676

- Material of Construction : Galvanised Steel/Canvas Cloth
- Option : With / Without Fire Retardant Properties
- Custom Built



Ball Weather Louver
Series AST-SBL

- Standard Size : 150/200 mm Dia
- SS Composition



Round Inline Fans
Series RIF

- 50 CFM - 900 CFM
- 5 mm - 35 mm Static Pressure



Mix Flow Inline Fans
Series MFF

- 175 CFM
- 10 mm Static Pressure



Compact Fan Sections
Series CSF

- 225 CFM - 7000 CFM
- 10 mm - 30 mm Static Pressure
- Option : With Filter / Acoustic Insulation



Rectangular Inline Fans
Series RIF

- 200 CFM - 6500 CFM
- 10 mm - 70 mm Static Pressure



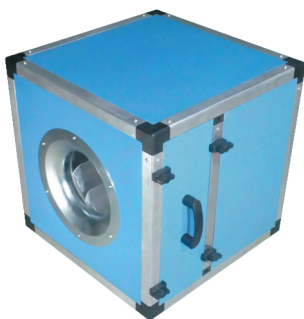
Propeller Fans
Series PF

- 150 mm - 900 mm Dia



Box Ceiling Fans
Series PPT - 35L

- Panel Size - 600 x 600 mm
- Air Capacity - 500 CFM approx.



Kitchen Exhaust Fan
Series KEF-BM

- 1000 CFM - 5000 CFM
- 25 mm - 65 mm Static Pressure



Kitchen Exhaust Fan
Series KEF-EM

- 1000 CFM - 5000 CFM
- 25 mm - 65 mm Static Pressure



Black Mix Flow Fans
Series AFR



Ultra Slim Fans
Series AT-10



Series ASP



Series APT



Series ASE



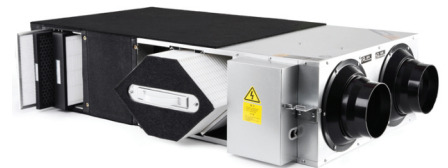
Series ASE



Silent Mix Flow Fans
Series ADD



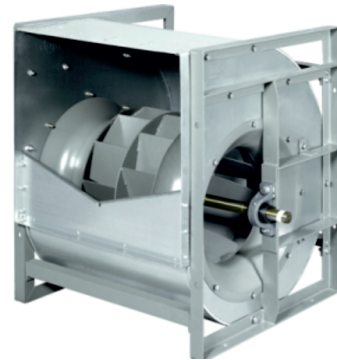
Single Room ERV
Series AT-501



Energy Recovery Unit
Series AHE

Centrifugal Fans - Backward/Forward Curved

- Fan Size(Dia): 200 - 2100 mm
- Air Capacity : 1500 -150000 CFM
- Static Pressures : 25 - 250 mm



Centrifugal Fans - Forward Curved

- Fan Size(Dia): 200 - 1120 mm
- Air Capacity : 1500 - 60000 CFM
- Static Pressures : 5 - 60 mm

SISW Centrifugal Fans - Backward Curved

- Fan Size(Dia): 200 - 1400 mm
- Air Capacity : 1500 - 100000 CFM
- Static Pressures : 25 - 250 mm



Axial Flow Fans

- Fan Size(Dia): 315 - 2000 mm
- Air Capacity : 3000 -150000 CFM
- Static Pressures : 25 - 200 mm
- Temperature Range : 50 - 250 °C
- Option : With or Without Fire Rating & Aerofoil Design

Jet Fans

- Fan Size(Dia): 315 / 355 / 400 mm
- Air Capacity : 1600 - 6600 CFM
- Temperature Range : 250 °C / 120 min.

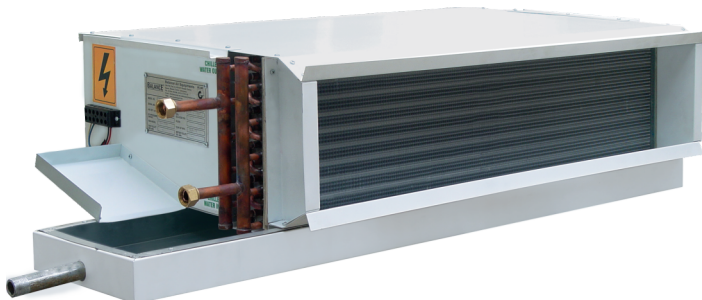


Dry Scrubber

- Efficiency : Upto 98%
- Air Capacity : 1500 - 100000 CFM
- Static Pressures : 25 - 250 mm

Air Handling Unit

- Air Capacity : Upto 50000 CFM
- Static Pressures : Upto 200 mm



Fan Coil Unit

- Range : 1.0, 1.5, 2.0, 2.5 TR

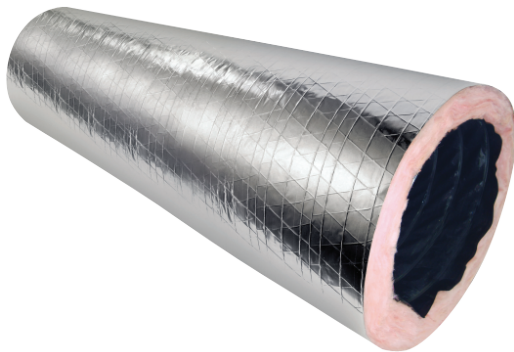
Uninsulated Flexible Duct

- Size : 100 mm - 500 mm ID
- Standard Length : 25 Feet
- Velocity Range : Upto 5000 FPM
- Pressure Handling Negative : Upto 1" (100 - 300 mm ID)
Upto 1/2" (350 - 500 mm ID)
- Pressure Handling Positive : Upto 10" (100 - 500 mm ID)
- Temp Range : - 20° to + 250° F



Insulated Flexible Duct

- Size : 100 mm - 500 mm ID
- Standard Length : 25 Feet
- Velocity Range : Upto 5000 FPM
- Pressure Handling Negative : Upto 1/2" (100 - 500 mm ID)
- Pressure Handling Positive : Upto 10" (100 - 400 mm ID)
Upto 6" (450 - 500 mm ID)
- Temp Range : - 20° to + 250° F
- R Value : R-4.2, R-6.0, R-8.0
- Standards : Meets UL 181 & NFPA 90A - 90B



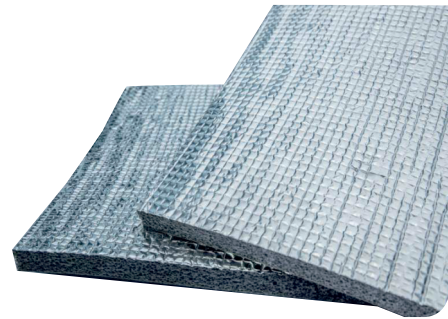
Semi Rigid Flexible Duct

- Size : 75 mm - 500 mm ID
- Standard Length : 10 Feet
- Velocity Range : 5000 FPM
- Pressure Handling Positive : Upto 12" (75 - 250 mm ID)
Upto 8" (300 - 500 mm ID)
- Temperature Range : - 112° to + 428° F
- Material : Special Aluminium Alloy





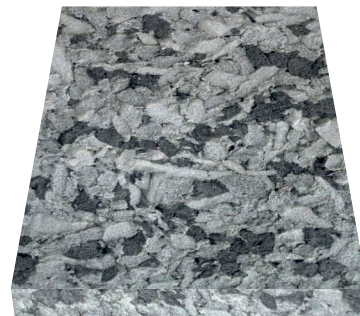
XLPE Roll Form



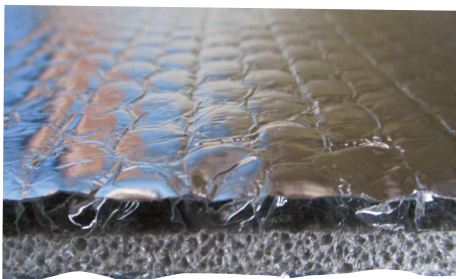
XLPE Sheet Form



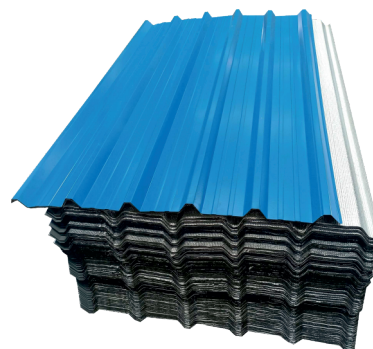
XLPE Tube Form



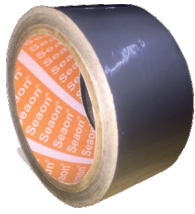
Acoustic Lining



Bubble Sheet



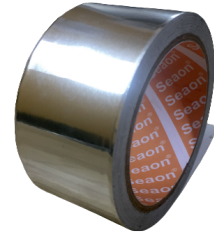
Pre-Insulated Roof Sheets



Grey Duct Tape



UV Barrier Tape



Aluminum Foil Tape



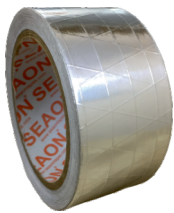
Alupet Tape



**EVA Gasket Tape -
Black Color**



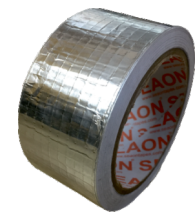
**EVA Gasket Tape-
White Color**



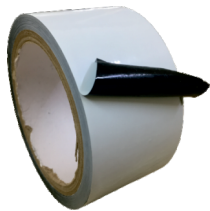
FSK Tape



Nitrile Tape - Black Color



Reinforced Alu Foil Tape



**Surface Protection Tape -
Black & White**



**Surface Protection Tape -
Transparent**



Pine Air Pvt. Ltd.

📍 128 D, Pocket 6, MIG Flats, Mayur Vihar, Phase-III, Delhi - 110 096 (INDIA)

☎ +91-11-43305202 📧 care@pineair.in 🌐 www.pineair.in

📍 A-63, Sector-5, Noida - 201301 (U.P) 📞 +91 9315318243 📧 mf@pineair.in

📍 The Port Plaza # 3000 Unit 3207, 4250-109 Ave NE Calgary AB T3N 1Z3 CANADA 📧 Email : pineair@acramax.ca

